

Jane Austen Ball
With

Short Dented Potts

September 10, 2022

**Programme &
Dance Instructions**

In alphabetical order

Alice	Hole in the Wall
Auretti's Dutch Skipper	Honeysuckle Cottage
Bonnie Cuckoo	Lili Burlero
Comical Fellow	Mr Beveridge's Maggot
Cottonwood	Newcastle
Draper's Maggot	Princess of Wales
The Ferry Dance	Queen of Sheba
Goodman of Cambridge	Sapphire Sea
Grimstock	A Trip to Paris
Hit and Miss	Turning by Threes
	Upon a Summer's Day

ALICE

(PHILIPPE CALLENS - 2002)

An English country dance, for Alice Markham

Music: Siciliano from Telemann's Concerto in A for oboe d'amore and strings.

Longways, Duple Minor 3/4 (AAB)

A1	1-2	1st Corners: set in place
	3-4	1st Corners: RH turn halfway
A2	1-4	2nd Corners the same
B1	1-2	All fall back directly away from your partner
	3-4	Cross into partners place passing right shoulder with partner
	5-8	All turn over right shoulder until you face another member of your minor set then "Walk the Square". Walk clockwise around your minor set passing through each of the other positions in turn and ending where you started this move (progressed and proper)
	9-12	2 hand turn with partner once around.

Auretti's Dutch Skipper

Longways duple minor - proper
Rutherford 1756 & Thompson 1757

- 8 bars 1st couple lead down through 2nd couple, cast up to place and then two-hand turn
- 8 bars 2nd couple lead through 1st couple, cast down to place and then two-hand turn
- 8 bars First corners 2-hand turn and then second corners 2-hand turn
- 8 bars All Set twice to partner and dance three changes circular hey (right-and-left), beginning with partner

The Bonny Cuckoo

Created by Gail Ticknor, Gail's Maggots, 1996. Published in CDSS News, March-April 1986 and The Blind Harper Dances, Allison Thompson, ed. 2003. Paul Stamler says, "Bonny Cuckoo' is a song, sung to the tune of "Sheebeg and Sheemore," hence the name of the dance. Shirley Collins recorded it on her 1959 debut album on Folkways."

Formation: 4-couple longways set.

Steps Traveling waltz step except for "balance" which is a waltz setting step.

Tune: "Sheebeg and Sheemore."

A	1-4	1s dance down the middle past two cpls; cast up around third cpl (2s move up).
	5-6	1s R-hand turn halfway (with partner) and face down.
	7-8	1s L-hand turn halfway with neighbour (3s)
	9-12	4s dance up the middle past two cpls; cast down around one cpl (1s, in 3rd place, move down)
	13-14	4s R-hand turn halfway (with partner) and face up.
	15-16	4s L-hand turn halfway with neighbour (3s). The order is now 2431
B	1-4	All circle L hands joined in W-pos, shldr level.
	5-6	Balance in and out.
	7-8	Release hands and W balance fwd and back, moving one place R, while M balance back and fwd, moving one place L
	9-12	Rejoin hands and all circle R.
	13-14	All balance in and out
	15-16	All 2-hand turn ptr to own side (half or once or once and a half). The order is now 2341
		Repeat dance three times from the beginning in new positions.

THE COMICAL FELLOW

The Comical Fellow

91

1st Man fet and turn the 2^d Wo. & the 1st Wo. fet & turn the 2^d Man & lead down the middle up again & cast off 1 Cu. & clap 4 times & turn single hands 6 round clap 4 times again and turn your Partner

Thompson, Twenty Four Country Dances for the Year 1776

Longways duple minor

A1	1st Man Set Forward to Corner Fall Back to place (4 steps), Dance Forward and 2 Hand Turn all the way around.
A2	1st Woman Set Forward to Corner, Fall Back to place (4 steps), Dance Forward and 2 Hand Turn all the way around.
B1	1s Lead Down the middle and Turn to Dance back up and Cast Down (2s leading up), All Clap 4 times approaching partner, and 2 Hand Turn Halfway (briskly) to progressed & proper place.
B2	Circle Left and back to the Right (8 slips each way), Clap 4 times. Partners 2 Hand Turn Halfway.

Cottonwood

by Brooke Friendly & Chris Sackett

Duple Minor Longways

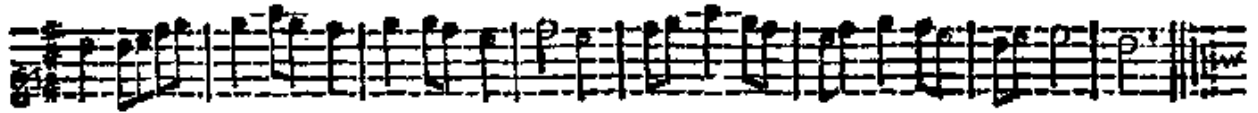
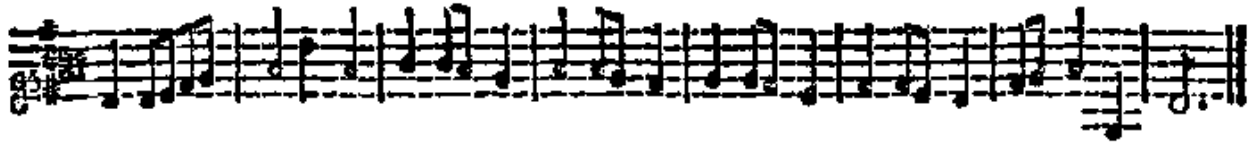
<http://dancevideos.childgrove.org/ecd/ecd-modern/304-cottonwood>

A1	1-4	1st corners L-hand turn once round
	5-8	Neighbours L-shoulder back to back
A2	1-4	2nd corners L-hand turn once round
	5-8	Partners L-shoulder back to back
B1	1-2	2s, taking two hands with partner, slip up (4 steps);
	2-4	keep hands to set down and up
	5-8	2s slip down; set up and down (letting go of hands to fall back to sides)
B2	1-4	1s, taking two hands with partner, slip down (4 steps); set up and down
	5-6	1s, taking two hands with partner, slip up
	7-8	1s cast into 2nd place (2s move up without taking hands)

Draper's Maggot

Draper's Maggot.

Longways for as many as will.



Note: Each Strain is to be play'd twice over.

Hands all four quite round and cast off. And Right and left with the 3. cu. Then the 1. Man turn the 3. Wo. and the 1. Wo. the 2. Man, and then his own Partner. Then the 1. Man turn the 2. Wo. and the 1. Wo. the 3. Man, and then turn Partners.

Playford -1706

Three couple set (Originally a triple minor)

A1	1-4	1st and 2nd couples circle four hands once around.
	5-8	1st couple cast down to middle place while 2nd couple lead up.
A2	1-8	1st and 3rd couple four changes of rights and lefts, beginning with partners.
B1	1-4	1st man turn 3rd woman two hands while 1st woman the same with 2nd man
	5-8	All Partners turn two hands
B2	1-4	1st man turn 2nd woman two hands while 1st woman the same with 3rd man
	5-8	2 nd couple turn two hands in place. 3 rd couple turn two hands moving into second place. 1 st couple cast to bottom.
	5-8	(To do as a triple minor – Original version) Partners turn two hands

The Ferry Dance

Duple Minor IMPROPER, by Joanne Thomson. Tune: Trip to Mayne by Karen McIvor, 2011, rec. Lover's Luck

Improper- 1's change places

A1 1-2 Partners set
3-4 Partners cross into
5-8 Half Poussette, Men moving forward to start

A2 1-2 Partners set
3-4 Partners cross into
5-8 Half Poussette, Men moving forward to start

B1 1-4 RH Star
5-8 LH Star
9-10 Neighbours Set
11-12 Partners Set
13-16 1's cast to 2nd place, 2's Lead up

Good Man of Cambridge

Gary Roodman, Additional Calculated Figures, 1992

Music: "Rondo alla Turca, Sonata in A Major, No. 11," by W.A. Mozart

Formation: Longways set for as many as will

A1	1-4	Circle left once around
	5-8	First corners cross Second corners cross
A2	9-12	Circle left once around
	13-16	First corners cross Second corners cross To finish in original places
B1	17-20	First couple lead down, turn individually and lead back to place
	21-24	Second couple lead up, turn individually and lead back to place
	25-32	Second couple cast up and dance half figure of 8 down around original places WHILE First couple move down and follow second couple Finish in line of four facing down with second couple in middle (both men on women's side)
C1	33-36	Line lead down and fall back, turn individually to finish facing up
	36-40	Line lead up and fall back bend line to finish improper
C2	41-44	First couple cross and go below WHILE Second couple turn two hand HALF way and lead up Finish proper and in progressed positions
	45-48	First couple gate NEW seconds up back to place to start again

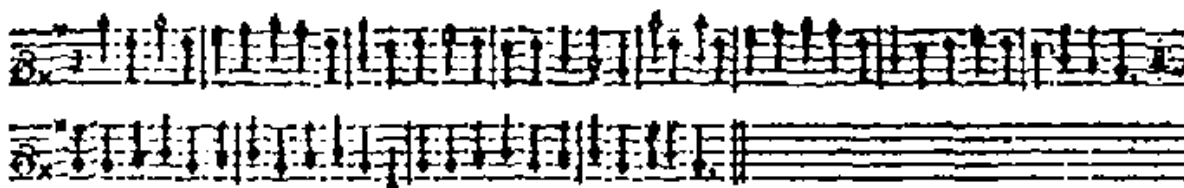
Grimstock

Playford 1651

Grimstock.

Longways for five.

○○○
)))



Lead up all a D, forward and back, set and turn S. That again.

First Cu. go down between the 2. the third come up between the first. This forwards and back, to your places.

Sides all, set and turn S. That again.

First Cu. go down under the 2. Couples arms, the 3. come up under the first. This forwards and back to your places.

Arms all, set and turn S. That again.

First Cu. change places, and go down the S. Hey And come up the S. Hey on her own side.

Formation: Longways set of three couples.

Music: Own tune

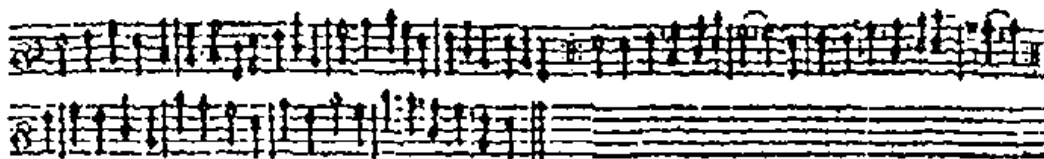
Verse 1	1 – 4	DLf DRb	Double forwards and backwards
	5 – 8	STL	Face your partner, and set and turn left.
	9 – 12	DLf DRb	Double forwards and backwards
	13 – 16	STR	Face your partner, and set and turn right.
Chorus 1	1 – 8	Hey	The first couple begin a hey by going between the second couple, and around the outside of the third couple, and so on back to place. Essentially this is a hey for the 3 men, and a hey for the 3 women, both done at the same time, but in mirror image.
Verse 2	1 – 4	Side L	Facing your partner, side left.
	5 – 8	STL	Set and turn left.
	9 – 12	Side R	Side right.
	13 – 16	STR	Set and turn right.
Chorus 2	1 – 8	Hey	The second hey is the same as the first hey, except that the couples remain holding hands while doing it. The first couple goes into the middle under the second couple's arms, then over the third, and so on back to place.
Verse 3	1 – 4	Arm L	Facing your partner, arm left.
	5 – 8	STL	Set and turn left.
	9 – 12	Arm R	Arm right.
	13 – 16	STR	Set and turn right.
Chorus 3	1 – 8	Hey	The third hey is the same as the first hey, except that the top couple swaps places before beginning it, and crosses over again at the bottom of the set so that the man and lady come back up their own side. The second and third couples do not swap.

HIT AND MISS

Hit or miss.

Longways for eight.

⊙⊙⊙⊙
⊃⊃⊃⊃



Meet all a D. back again. Meet all again, lead each others Woman. The single Hey all four. That again. a D. to the left hand. Change hands, meet again, take your own We. and to your places.

Sides all. That again. As before. As before.

Arms all. That again. As before. As before.

Formation: Couple facing couple

MUSIC **MOVEMENTS**

First Part		
A	1-4	Couples move forward a double, meet, and fall back a double to places.
	5-8	That again.
B	1-2	Couples move forward a double and meet (r.s.).
	3-4	First man leads second woman up a double, while second man leads first woman down a double (r.s.).
	5-6	Both couples turn and face one another. First man leads second woman down a double; while second man leads first woman up a double (r.s.).
	7-8	First man and first woman, joining right hands, fall back a double to places; while second man and second woman do the same.
C	1-6	Circular-hey, partners facing, four changes (sk.s.).

Second Part		
A	1-4	Sides all. (Banana siding)
	5-8	That again.
B, C		As in First Part.

Third Part		
A1	1-4	Partners arm with the right.
	5-8	Partners arm with the left.
B, C		As in First Part.

Hole in the Wall

[222]

Hole in the Wall. ④④④④

Longways for as many as will.

The 1. cu. cast off below the 2. cu. and lead up in the middle. The 2. cu. cast up and lead down the middle.

The 1. Man crosses over with the 2. Wo. and the 1. Wo. with the 2. Man, so all four Hands half round, and so cast off into the 2. cu. Place, the rest do the like.

Formation: Duple Minor longwise proper set

Music: Own tune – triple time, 16 bars per sequence.

Source: Playford (1695)

Bars

- 4 First couple casts off around twos, leads up the middle back to place
- 4 Second couple casts up around ones, leads down the middle to place
- 2 1st corners change using “hole in the wall” turn
- 2 2nd corners change using “hole in the wall” turn
- 2 All circle left ½ way
- 2 Ones cast down while twos lead up the centre to progress

Honeysuckle Cottage

longways duple minor IMPROPER Gary Roodman 2003 Bb, 3/4

A 1-4 Women turn single and change places passing right shoulder

5-6 All face across the set for two changes of a circular hey (no hands)

7-8 All 2-hand turn halfway with person across the set (neighbour)

9-12 Men turn single and change places passing right shoulder

13-14 All face across the set for two changes of a circular hey (no hands)

15-16 All 2-hand turn halfway with person across the set (partner)

B 1-4 With neighbour, fall back and come forward turning single into . . .

5-8 Right-hands star once around

9-12 With partner, balance forward and back with right hands joined and change places (as in "Duke of Kent's Waltz")

13-16 Partners right-shoulder back-to-back

Lilli Burlero

Playford 8th ed 1690– 2014 interpreted by Colin Hume

Formation: Longways set duple-minor proper

Lilli Burlero.

Longways for as many as will.



The 1 Man lead his Partner down thro' the 2. cu. and cast up to his own place, and the 2. cu. lead up thro' the 1. cu. and cast off into their own places, then the 1. Man cross over with the 2. Wo. and the 1. Wo. with the 2. Man, then fall back and meet and turn S. then cross over, and the Men back to back, the We. at the same time doing the like, then the two Men right and left, the We. at the same time doing the like till the 1. cu. comes into the 2. cu. place.

A1	1-4	Ones lead down through twos (skip), cast up to place.
A2	5-8	Twos lead up through ones, cast to place.
B1	9-10	First corners cross
	11-12	Second corners cross
	13-14	Fall back a double with neighbour
	15-16	come forward turning single away from neighbour $\frac{3}{4}$
B2	17-20	Back-to-back with neighbour
	21-24	Starting with neighbour three changes of a circular hay

Mr. Beveridge's Maggot

Playford 9th ed 1695 Interpreted by Colin Hume 2007

Mr. Beveridge's Maggot.

Longways for as many as will.



Note: *The first Strain twice, and the last but once over.*

The 1. Man cross over and go back to back with the 2. Wo. then the 1. Wo. cross over and go back to back with the 2. Man at the same time. Then meet and turn S. then 1. Man turn the 2. Wo. with his Right-hand, and 1. Wo. turn the 2. Man with her Right-hand at the same time, then 1. cu. take Left-hands and turn into their own places. The 1. cu. cross over into the 2. cu. place, and go back to back with their Partner, then all four lead up hands a-breast, then go the Figure through, and cast off into the 2. cu. place.

A1	1-2	First couple cross and cast below the twos WHILE Two meet move up and turn out (man over right, woman over left) to face down.
	3-4	Mirror back to back neighbour with ones passing between to twos to start
A2	5 - 6	First couple mirror come in to meet (3 steps) then turn single down (3 steps man over left shoulder woman over right)
	7	Half right hand turn neighbour
	8	First couple half left hand turn with partner (Everyone should now be in their starting positions)
B	9-12	First couple cross and cast down then back to back finishing improper in centre of line WHILE second couple take hands and pass up and cast to ends of line of four facing up
	13-14	Lines advance three steps and retire
	15-16	First couple cross up and cast down WHILE Second couple move toward partner, meet and lead up

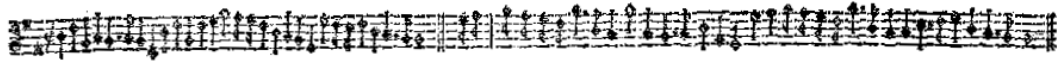
Newcastle

Playford 1th ed 1651

(77)

Newcastle

Round for eight



Meet all, back again, set to your own, and to the next. That again.

Arms all with your own by the right, men all fall with your left hands into the middle, We go round them to your places. Arms again with your own, and We left hands in, men go about them towards the left to your places.

Sides all with your own, and change places with them. Sides with the next, and change places with them.

The first man and 3. Wo. take hands and meet, the first Wo. and 3. man, lead out again then holding up your hands, the other four cast off and come under your arms to their places. The other four the like.

Arms all with your Wo. and change places. Arms with the next and change places. Now every man is with his own Wo. in the Co. place.

Fall back from each other, four and four a breff to each wall, turn and change places with your opposites. Fall back from each other four and four along the some, turn S. change places with your opposite. So each falls into his place as at first.

A1	1-4	In a circle all forward and back a double
	5-8	Set to partner, set to corner
A2	9-16	Repeat
B1	17-18	Arm right with partner
	19-24	Men left hand star all the way round WHILE Women skip clock wise (other direction to men) back to place
B2	25-26	Arm LEFT with partner
	27-32	Women right hand star all the way round WHILE Men skip counter clock wise (other direction to women) back to place
A1	1-4	All side with partner over and back
	5-8	All step to the right, honour and pass partner to face new partner on corner of set
A2	9-12	All side with new partner over and back
	13-16	All step to the right, honour and pass partner to face next partner in new position in set
B1	17-18	Present side couples lead to centre, change hands and lead out, then form an arch
	19-24	Present head couples cast off outside, go under the nearest arch with someone, and return to the place you cast from.
B2	25-32	Repeat, head couples leading in and out, side couples casting off
A1	1-4	Present partners arm R once around
	5-8	Arm left 1 1/2 to meet a new partner on the corner of the set
A2	9-12	Arm R this partner
	13-16	Arm L 1 1/2, ending in lines up and down the hall, close together, with the W on the L of their current partner
B1	1-6	Lines fall back a double and come forward, turn single
	7-8	Pass through the line changing places with opposite and forming new lines across the hall, close together. (Dancers on the inside of the old line go to the ends of the new line: forward 4 steps. Dancers on the end of the old line take 2 steps forward and 2 steps inward to end close to an opposite)
B2		Lines fall back, come forward, turn single, and pass through to meet your original partner in original place in a square

Princess of Wales, Her Waltz

by Robert Jamison 2008

A	1-2	Men set in place to partners
	3-4	Men turn single but in front advancing toward partner and back.
	5-8	Women do the same
B	1-2	1 st corners change
	3-4	2 nd corners change {Start with left foot.}
		{The following requires stepping on the left foot first. This is a bit awkward at first, but one quickly becomes accustomed to it. There is no problem for first corners who are standing. Second corners can start their change on the left foot or end their change with a touch (instead of step) on the left foot. }{Call as "Step left."}
	5	Advancing toward partner, step on left and touch with right
	6	Advancing toward partner, step on right and touch with left
	7	Advancing toward partner, step on left and touch with right. End facing partner, slightly off set, with partner slightly to right
	8	Partners whirl around (R sh Hole-in-the-Wall half-gypsy), 1s take hands in the centre, 2s back up to sides
	C	1-4
5-8		Four changes of circular hey, no hands (fast)

Queen of Sheba

Magot Pie, Marjorie Heffer and William Porter, 1932

Music: Own tune Arrival of the Queen of Sheba by Handel

Arrangement: Kathy Potter

Formation: Longways set for four couples. 1st and 3rd couples improper

1-4	Up a double, back a double
5-8	Gypsy partner right shoulder
9-12	Down a double, back a double
13-16	Gypsy partner left
17-20	Right Hand Stars (top 2 couples and bottom 2 couples)
21-24	Mid couples Left Hand star WHILE end couples chase clockwise to other end
25-28	Right Hand Stars (top 2 couples and bottom 2 couples)
29-32	Mid couples Left Hand star WHILE end couples chase clockwise to other end finish with men facing out of the set and women facing their partners' back
33-36	Forward & back a double to man's wall
37-40	Gypsy right with neighbour (along the line) finish with women facing out of the set and men facing their partners' back
41-44	Forward & back a double to ladies' wall
45-48	gypsy left along line (neighbour)
49-50	End couples turn with right hand into arch ALONG THE SET, women in middle
51-54	Mids. chase through clockwise under arches to place
55-56	Top couples quarter turn back to place
57-58	L2 & M3 three quarter right hand turn into arch ACROSS THE SET
59-62	Ends chase clockwise under arches to place
63-64	Mids. quarter turn back to place
65-72	Bomb burst: End couples and middles lead out, and fall back then gypsy that person right
73-80	Star burst: With neighbour on corners, face diag. out of the set. Lead out and fall back then gypsy that person left. Finish in side lines Ends face middles, middles face ends
81-86	Half hey plus one place along the line
87-88	Take two hands with partner and change places
89-95	Half hey plus one place along the line
95-96	Take two hands with partner and change places

SAPPHIRE SEA

<https://www.youtube.com/watch?v=g-8LyExynvA>
<https://www.youtube.com/watch?v=caUcakajbDA> (Much slower)

Composed: Christine Robb
Formation: Longways duple minor
Music: 2/2 metre
Bare Necessities English Dances Track 9
Airdance: Tr. 3 Rambling Pitchfork.

Bars

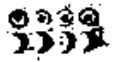
- 4 Circle four once around
 - 4 1st corners (M1L2) turn RH
 - 4 2nd corners (M2L1) turn LH
 - 4 1st cast down coming up in the middle of a line of 4 while 2s lead up onto the ends.
All face L2
 - 8 Dolphin Hey
1s passing R shoulder with 2nd L to begin.
Finish in line of four facing up.
(From Callers RtoL: M2, M1, L1, L2)
 - 4 Line lead up a double and fall back
 - 4 2s gate 1st up approx. halfway, letting go early to drift into a new circle for the next round.
- 32

A trip to Paris

Playford 1726

A trip to Paris.

Longways for as many as will.



Note : Each Strain is to be play'd twice over.

The 1st and 2d. cu. Sett a-cross and turn all four round single, then Sett again and turn to your own places. Then cross below the 2d. Cu. and up again to your places, the 1st. Man change place with the 2d. Wo. and the 1st. Wo. with the 2d. Man, then Hands half round and cast off.

Duple Minor Longways

A1	1-8	All set to partners and cross over turning single 1 1/2; repeat to places
B1	1-10	1st couple cross over, make a wide cast down (sk.s.); cross below 2nd couple, cast up to places and turn single.
C1	1-2	1st corners cross,
	3-4	2nd corners cross,
	5-6	Circle left 1/2 way
	7-8	1st couple cast down while 2nd couple move up

TURNING BY THREES

https://www.youtube.com/watch?v=_TgRmRNDPBM
<https://www.youtube.com/watch?v=Fxk1Mhew0q4>

Composer: Gary Roodman, 2003
Formation: Circle of three couples
Music: 32 x 3 Waltz - (Tourner à Trois by Paul Machlis)

Bars

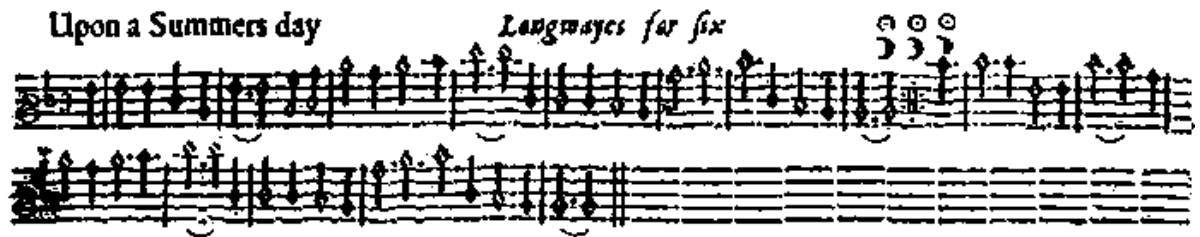
4 All take hands, face L and circle L (2B), turn single L (2B)
4 4B Repeat to R
4 Partners back to back
2 Grand chain 2 places (quickly): RH with partner and LH with next
2 RH turn with the next person once around into...
4 Gents L hand star once around (back to these new places)
4 Ladies R hand star once around
2 Gents dance to the centre with 2 Single steps (step, close; step, close)
2 Ladies dance to the centre with 2 Single steps, while... Gents fall back
4 Ladies look over R.shoulder, gypsy with this new partner (about 1¼ around, back into the circle)
32
64 Repeat twice

Steps and Style: "Historical English Style." Waltz steps throughout except where noted.

Suggested steps for dancing into the centre and falling back (bars 25-28) are similar to a Pavane step: step fwd R, close L behind, step fwd L, close R behind (2B), then step RLR backwards and close L (2B).

Upon a Summer's Day

Playford 1651



Lead up all a D. forwards and back, set and turn S. That again.

The men take all hands, and the women hands, meet all a D. back again; the first on each side go under the others Arms on their own side, and meet below. Hands again, and the next Cu. as much; Hands again, and the next Cu. as much.

Sides all, set and turn single. That again.

As before.

Arms all, set and turn single. That again.

As before.

<http://www.youtube.com/watch?v=ztZC6-A1dI0>

Formation Longways set for 3 couples

A1	Verse 1-4	Up and back a double.
	1	
	3-4	Set and turn single
A2	1-8	Repeat
B1	Chorus 1-4	Take hands in lines, forward and back.
B1	5-8	Bottom two men and bottom two women raise their joined hands to form an arch, while the first man and first woman go down the set in the centre, go out through the arch on their own side, and meet at the bottom
B2	1-8	Repeat with new top couple
B3	1-8	Repeat with new top couple to end in starting places
A1	Verse 1-4	Sidings right shoulder (Pat Shaw or into line sidings) .
	2	
	3-4	Set and turn single
A2	1-4	Sidings left shoulder (Pat Shaw or into line sidings)
		.
	3-4	Set and turn single
B1-3	Chorus 1-24	Repeat
A1	Verse 1-4	Arm right
	3	
	3-4	Set and turn single
A2	1-4	Arm Left
	3-4	Set and turn single
B1-3	Chorus 1-24	Repeat